



# EPIC™ GLOBAL SYSTEM

BEYOND THE LIMITS!

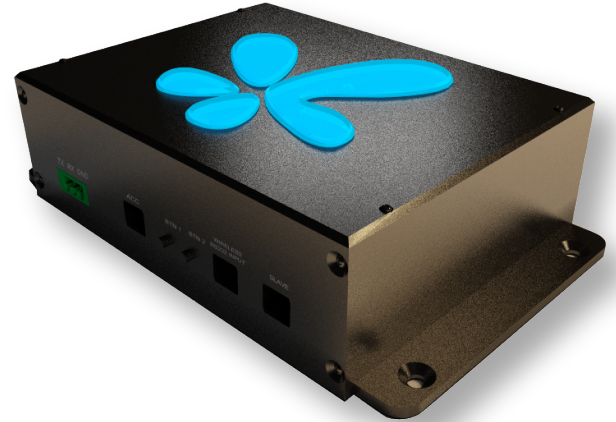


## EPIC'S RS232 ADVANCED LED CONTROLLER

|                                  |
|----------------------------------|
| Specifier's Reference            |
| Project                          |
| Type                             |
| Model No.                        |
| Comments or Special Instructions |

### SPECIFICATIONS

|                          |  |
|--------------------------|--|
| Power Requirement        | External power supply - (power supply sold seperately)   |
| Operating Voltage:       | Input: 8-24V DC<br>Output: 8-24V DC (depends on input)   |
| Channel Current:         | 5Amp@12V DC Per Channel (Total: 40Amps)<br>10A@24V DC Per Channel (Total: 80Amps)  |
| Wattage:                 | 12V DC -120W per channel (Total: 480W)<br>24V DC - 480W per channel (Total: 1920W)   |
| LED intensity control:   | 255 intensity levels/channel   |
| Communication Interface: | Serial RS232 and serial TTL interface,<br>9600 baud, 8 data bits, 1 stop bit, no parity, no handshaking, and no flow control |
| Dimension:               | 4" x 6.75" x 1.75" in  |
| Weight:                  | 3.5 lbs  |
| Control & Indicator      |  |
| Net ID:                  | DIP Switches   |
| Power:                   | Blue LED on logo, indicates when power is applied  |
| RGB Speed:               | Blue LED on logo, indicates color changing speed   |
| R-G-B output:            | RGB LED on board   |
| White Output:            | White LED on board   |
| Enclosure:               | Black anodized aluminum with laser engraving<br>Logo - optical grade acrylic with LEDs                                       |
| Connectors:              | Screw terminal up to 10Awg conductor wire diameter.  |
| Recommended Wiring:      | up to 5 Amp total<br>18 Awg up to 10 Amp total<br>16 Awg up to 20 Amp total<br>12 Awg up to 40 Amp total<br>10 Awg           |
| Warranty                 | 5 Years  |



The EP-RS232-ADV LED Controller is a highly professional and intelligent system to control common anode LED lighting or incandescent light bulbs via 2-way RS232 serial commands. The EP-RS232-ADV provides 4 high current channel to create light scenes. The controller can also operate in a standalone mode which includes pre-programmed light sequences. This LED controller is ideal used for flexible ThinGlow™ LED strips. The EP-RS232-ADV LED Controller also operate independantly or integrated into a whole-house control system.



for operating instructions! Please visit our website or contact us directly

### Ordering Information

| PRODUCT      | ACCESSORIES  | POWER SUPPLY | WATTAGE            |
|--------------|--|--------------|--------------------|
| EP-RS232-ADV | RECIEVER<br>TRANSMITTER<br>TOUCH PAD<br>MOMENTARY-SWITCH<br>RELAY<br>GS-RS232<br>IPAD<br>IPAD-MINI<br>USB-232<br>WALLMOUNT-FACE-PLATE<br>2-WAY RS232 ADAPTER<br>4-WAY RS232 ADAPTER<br>DIN RAIL MOUNTING BRACKET<br>DIN RAIL KIT | 1. 12V       | 1. 25W** 7. 250W   |
|              |  | 2. 24V       | 2. 40W** 8. 350W   |
|              |  |              | 3. 60W** 9. 500W   |
|              |  |              | 4. 100W** 10. 750W |
|              |  |              | 5. 150W 11. 1000W  |
|              |  |              | 6. 200W 12. 2000W  |

\*Additional costs may apply. \*\* Class 2 power supplies. 12V 60W max. | 24V 100W max. Please indicate if class 2 is needed.

PRINT SEND